

# Voluson P6



Extraordinary vision



healthymagination

# Your first Voluson... years in the making.

GE Healthcare Women's Health ultrasound has developed a strong reputation for high performance – from exceptional image quality and reliability, to the ease of use and streamlined ergonomics that help drive efficient workflow.

Now those established benefits have been combined into the new Voluson\* P6 – a cost effective way to acquire a Voluson and bring the benefits of high performance ultrasound to your patients. An excellent introduction to the Voluson family, a Voluson P6 delivers hard-working capabilities that fit your practice, your patient base, and your budget. Affordable software upgrade pathways are available to grow with your needs when you are ready.





# A system designed for ease of use and comfort

+ **17-inch, flat-screen** moves independently of the console

+ **Wireless connectivity** enables efficient transmission of reports and images

+ **Simplified keyboard** enables exams to be completed with few keystrokes and rotates to adjust to the user

+ **Probe holder** protects delicate probes while positioning them for user convenience

+ **Sleek, lightweight console** with a small physical footprint to help enhance use of small spaces

+ **Integrated peripherals** including a DVR module to help expand functionality





Keyboard is designed for ease of use and to limit reaching, which may help reduce user fatigue.

- 1 **Trackball:** Surrounded by curved set keys that help users easily navigate through exams and make selections
- 2 **One touch auto optimization:** Available for 2D and Doppler
- 3 **Rotary knob:** Easy navigation through on-screen menus
- 4 **DVR button:** One touch streaming recording of the exam to the integrated DVR
- 5 **Report button:** Export reports in PDF format at the touch of a button
- 6 **Zoom:** Easily localize regions of interest for closer study with HD-Zoom
- 7 **Probe button:** Access wide sector functionality for endocavitary probes



Easy Voluson workflow

# Clear 2D images help create stunning 3/4D studies

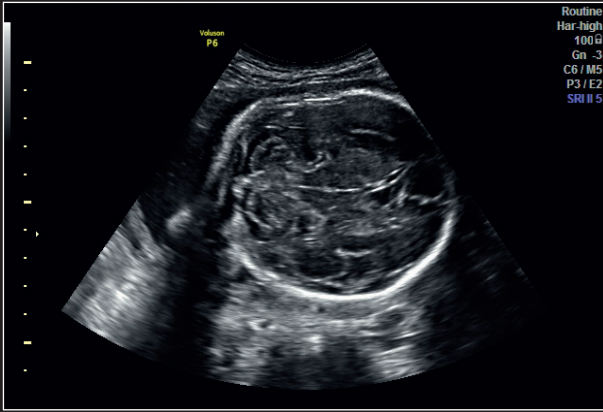
Voluson technology has established a high standard for 2D and 3D imaging – the Voluson P6 continues the tradition. You can count on exceptional images in applications from routine OB evaluations and gynecological studies, to fertility assessment and embryo transfers.

- **SRI (Speckle Reduction Imaging)** – Helps enhance visualization and contrast resolution.
- **HD-Zoom** – Helps locate region of interest for closer study.
- **CrossXBeam<sup>CRI\*</sup>** – Helps enhance tissue interfaces and border differentiation.
- **BetaView** – Allows user to steer the scan plane, moving only the elements without having to move the probe itself. Helps enhance patient comfort where far-reaching movements of the probe may be required.
- **Multi-planar View** – Volume displayed in three orthogonal planes (sagittal, transverse, and coronal) which can be manipulated to help analyze anatomy and/or pathology along with the relationship to the surrounding anatomy.
- **Wide range of 2D probes** – Available for use in most applications.

## 3/4D imaging

Allows for analysis of volume data during the exam or off-line to help enhance clinical confidence. View and manipulate volumes in sectional planes, or in multiple render methods including transparency, surface, and skeletal rendering techniques.





2D view of fetal brain using the RAB2-6-RS probe.



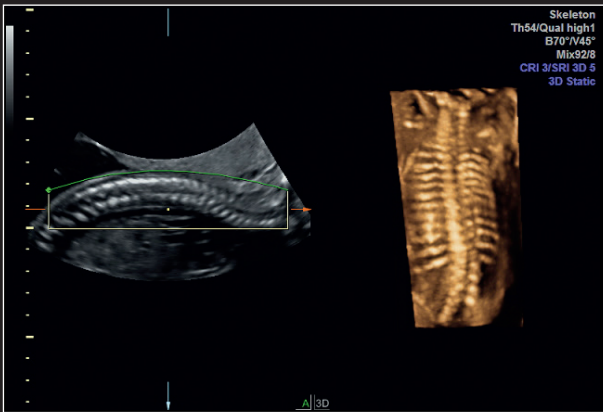
2D view of fetal abdomen using the RAB2-6-RS probe.



2D view of uterus using the 4C-RS probe.



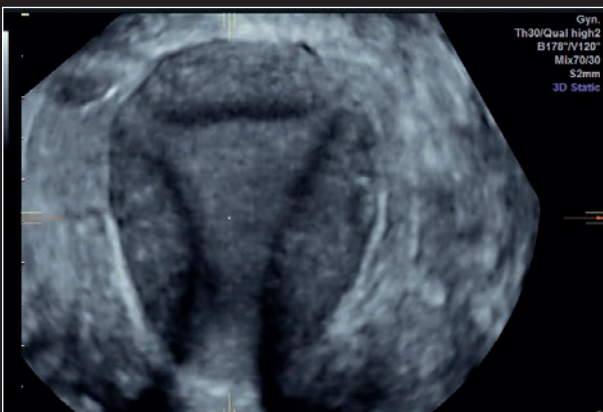
2D image of a cyst using RIC5-9W-RS and wide sector.



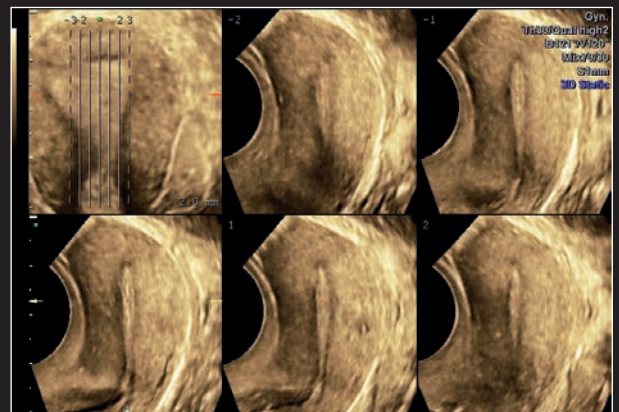
3D fetal spine for enhanced clinical confidence using the RAB2-6-RS probe.



3D fetal face for enhanced clinical confidence using the RAB2-6-RS probe.



Uterus frontal view shown in 3D using the RIC5-9W-RS probe.



Uterus shown with Tomographic Ultrasound Imaging (TUI) using the RIC5-9W-RS probe.

## Join the Club. Voluson Club.

### Our relationship promise to you:

We are committed to providing you with technology and support which truly meet your needs ... all at an affordable price.

- Online remote support
- Education and product training
- Finance solutions
- Responsive on-site service
- Probe protection

Voluson Club is an online community of Voluson users that can help you experience the full diagnostic power of your Voluson ultrasound.

Online materials can help you enhance your knowledge of system operation and teach you techniques to help improve your productivity. Club members also can interact with other Voluson users, receive communications and access a wide library of Voluson specific materials.

Joining is easy, visit [www.volusonclub.net](http://www.volusonclub.net).

For more information please contact your GE Healthcare sales representative.

GE Healthcare GmbH  
Beethovenstr. 239  
42655 Solingen, Germany  
T 49 212-28 02-0  
F 49 212-28 02-28

[www.voluson.gehealthcare.com](http://www.voluson.gehealthcare.com)

#### UNITED KINGDOM

GE Healthcare  
Pollards Wood  
Nightingale Lane  
Chalfont St Giles  
Buckinghamshire, HP8 4SP  
T +44 1494 544000

#### AMERICAS

GE Healthcare  
9900 West Innovation Drive  
Wauwatosa, WI 53226  
U.S.A.  
T +1 888 202 5582

#### APAC

GE Healthcare Asia Pacific  
4-7-127, Asahigaoka, Hino-shi  
Tokyo 191-8503 Japan  
T +81 42 585 5111

#### ANZ

T 1300 722 229 (Australia)  
T 0800 434 325 (New Zealand)

#### ASEAN

T +65 6291 8528

#### Korea

T +82 2 6201 3114

©2015 General Electric Company – All rights reserved.

General Electric Company reserves the right to make changes in specifications and features shown herein, or discontinue the product described at any time without notice or obligation. Contact your GE Representative for the most current information.

GE and GE Monogram are trademarks of General Electric Company.

GE Medical Systems Ultrasound & Primary Care Diagnostics, LLC, a General Electric company, doing business as GE Healthcare.

\* Trademark of General Electric Company.

JB30534XE

300-15-U015E

ecomagination<sup>SM</sup>

healthymagination



GE imagination at work